

EZE-CRACK®

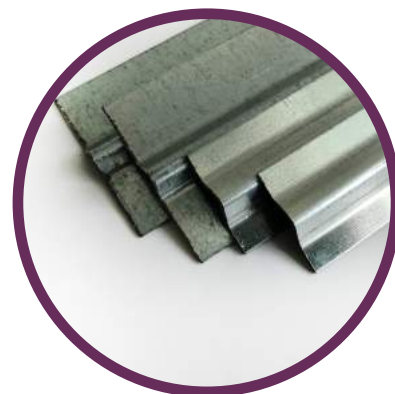
METAL CRACK INDUCER SYSTEM



PRODUCT DESCRIPTION

CORKJOINT Eze-Crack® Metal Crack Inducers are used in concrete slabs to induce controlled cracks at specific locations while allowing for continuous concrete pouring. **Eze-Crack®** is made from rigid galvanised metal and is positioned after levelling/screeding of the concrete has been undertaken and must be inserted into the concrete while still wet, flush with the top of the surface.

As the concrete cures and shrinkage takes place, **Eze-Crack®** will induce a crack downwards, in a controlled fashion, helping to eliminate uncontrollable surface cracking of the concrete. Position placement of **Eze-Crack®** must be determined/advised by the Project Design Engineer so as to achieve the best desired joint locations for the concrete area.



ADVANTAGES

- Designed for on-ground slabs and can be butted up to any given edge
- Allows the concrete to crack along the **Eze-Crack®** whilst the concrete cures
- Profile makes **Eze-Crack®** almost impossible to dislodge therefore surface can be floated as normal to obtain a flat continuous surface
- **Eze-Crack®** provides a positive alternative to existing methods and saw cut options
- **Eze-Crack®** insures no cutting of mesh enabling the continuity of mesh and rebar being utilised to their maximum strength
- Finish concrete floors the same day they are laid
- No need to saw cut concrete surface, saving time and additional expense
- Provides a continuous surface appearance
- Available in convenient three (3) metre length
- Provides controlled concrete cracking

Note : The product's design and performance, its intended use, installation and final confirmation and approval for use, must be provided by the project's Design Engineer and Project Manager.

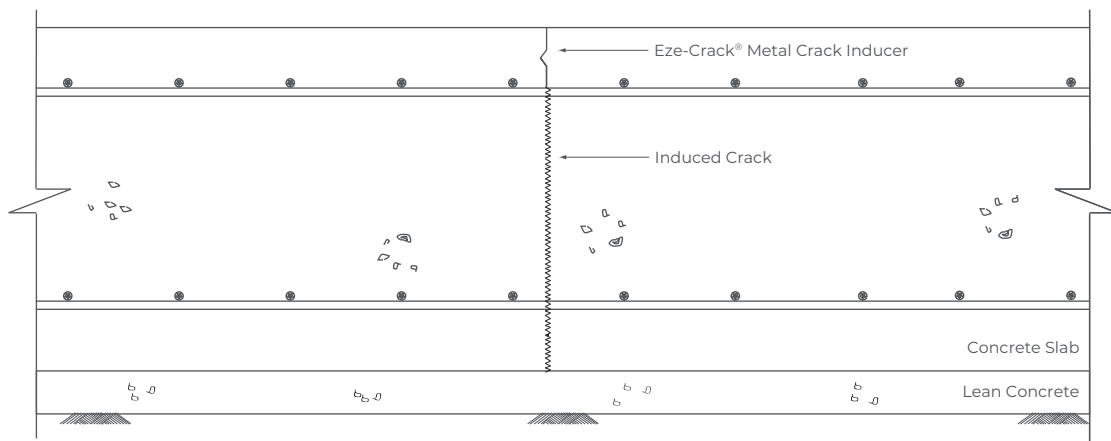


TECHNICAL FEATURES

THICKNESS	1.0mm
DEPTH	30mm & 50mm
LENGTH	3 metres
MATERIAL	Galvanised Steel



TYPICAL APPLICATION



SLAB ON GROUND APPLICATION



INSTALLATION PROCEDURES

During concrete screeding and while the concrete is wet, **Eze-Crack®** can be installed at pre-determined locations by placing the product vertically into the concrete surface. With a series of gentle push/pull movements from left to right, the product will slowly immerse itself into the concrete just below, or at surface level.

*Note: **Eze-Crack®** should not be placed after full screeding has taken place but when screeding has only just passed the location of where the **Eze-Crack®** is to be inserted.*



WRITTEN SPECIFICATION

Where shown in the drawings, the metal crack inducers shall be **Eze-Crack®** as supplied by **CORKJOINT**. The application / installation of the product must be in accordance with the manufacturer's recommendations.



HEALTH AND SAFETY INFORMATION

In confined spaces or in still air conditions, the use of a ventilation fan or suitable respirator should be used, and the advice and approval of the Site Safety Supervisor is essential.



DISCLAIMER

The information and the recommendations relating to the application and end use of this product are given in good faith and are based on the information provided by the manufacturer of the product and/or the Company's current knowledge and experience in connection with the product when properly stored, handled and applied under normal conditions and no liability of final function at the job site is assumed. In practice, the differences in materials, substrates and actual site conditions are such that no warranty in respect of merchantability of, or fitness for, particular purpose, nor any liability arising out of any legal relationship whatsoever, can be inferred either from this information, or from any written and/or oral recommendations, or from any other advice offered by the Company. The Company also has no express or implied knowledge of any particular purpose for which the product is required and any such information given will not be taken into account in the supply of this product. No responsibility or liability by the Company will be accepted for misuse, misreading or derivation from recommended guidelines in respect of this product and the user shall determine the suitability of the product for his intended use and assume all risks and liability in connection therewith. The information contained in our brochure may change at any time without notice. Any use of this product, **Eze-Crack®**, in any application should be approved as suitable for use/application by the Design Engineer and Project Manager.

Effective Date: 05 APRIL 2022

CORKJOINT (MALAYSIA) SDN BHD 383102-H

📍 No. 51, Jalan BRP 8/2, Bukit Rahman Putra Industrial Park, 47000 Sungai Buloh, Selangor, MALAYSIA

☎ +603 6148 8010

📠 +603 6148 8020

CORKJOINT (SINGAPORE) PTE LTD 200716724-K

📍 No. 10 Buroh Street #02-26 & 27, West Connect Building, SINGAPORE 627564

☎ +65 6455 9331

📠 +65 6455 8535

